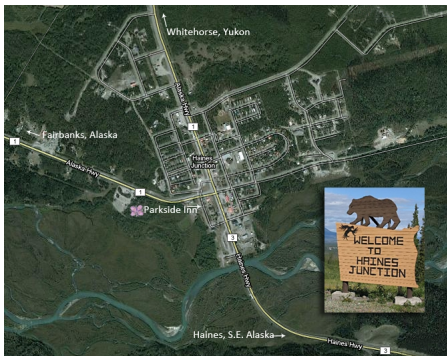


Parkside Inn is located in the [Village of Haines Junction](#) , the gateway to [Kluane National Park](#) , 159 kilometers from [Whitehorse](#) , the capital of the [Yukon](#) .



[View in Google Maps](#)

Traveling Whitehorse to Haines Junction:

To find Parkside Inn when traveling from [Whitehorse](#) , continue straight through the main intersection of the Alaska Highway No.1 and the Haines Road No.3. We are located on the right hand side of the Haines Road No. 3.

Traveling From Haines, Alaska to Haines Junction:

To find Parkside Inn when traveling from [Haines, Alaska](#) , we are on the left hand side of the Haines Road No.3, just past the second bridge as you enter Haines Junction.

Traveling From Fairbanks, Alaska to Haines Junction:

To find Parkside Inn when traveling from [Fairbanks, Alaska](#) , turn right at stop sign of the

Our Location

intersection of the Alaska Highway No. 1 and the Haines Road No.3, the main intersection of Haines Junction. We are located on the right hand side of the Haines Road No.3.