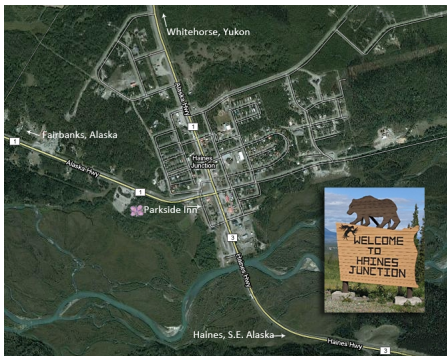


Parkside Inn is located in the [Village of Haines Junction](#) , the gateway to [Kluane National Park](#) , 159 kilometers from [Whitehorse](#) , the capital of the [Yukon](#) .



[View in Google Maps](#)

### **Traveling Whitehorse to Haines Junction:**

To find Parkside Inn when traveling from [Whitehorse](#) , continue straight through the main intersection of the Alaska Highway No.1 and the Haines Road No.3. We are located on the right hand side of the Haines Road No. 3.

### **Traveling From Haines, Alaska to Haines Junction:**

To find Parkside Inn when traveling from [Haines, Alaska](#) , we are on the left hand side of the Haines Road No.3, just past the second bridge as you enter Haines Junction.

### **Traveling From Fairbanks, Alaska to Haines Junction:**

To find Parkside Inn when traveling from [Fairbanks, Alaska](#) , turn right at stop sign of the

## Our Location

---

intersection of the Alaska Highway No. 1 and the Haines Road No.3, the main intersection of Haines Junction. We are located on the right hand side of the Haines Road No.3.